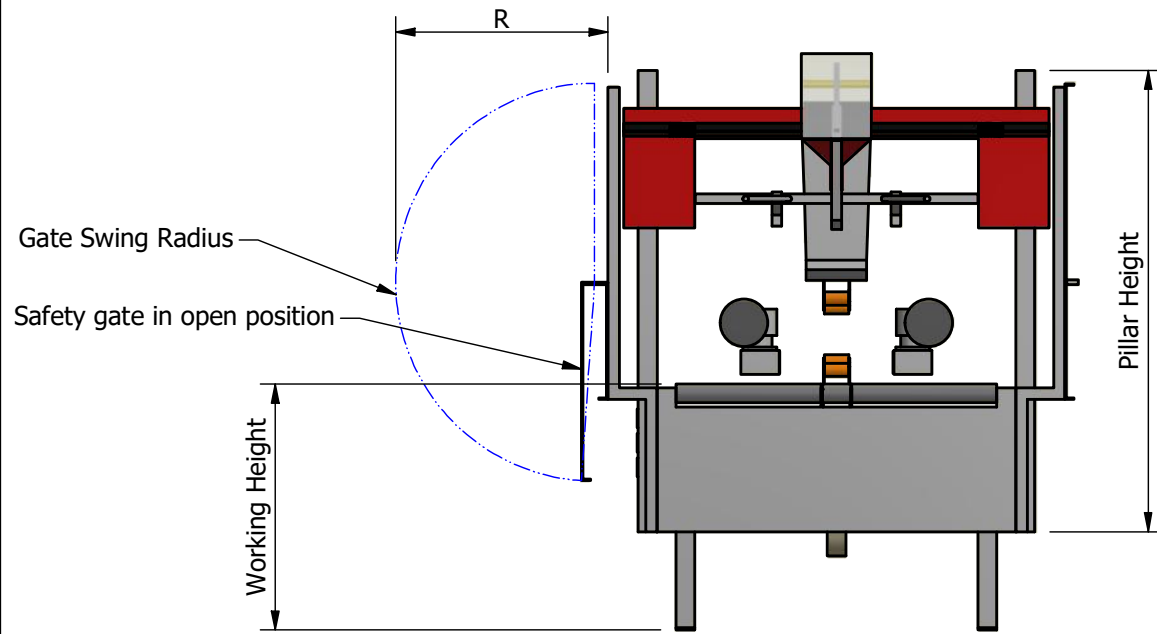


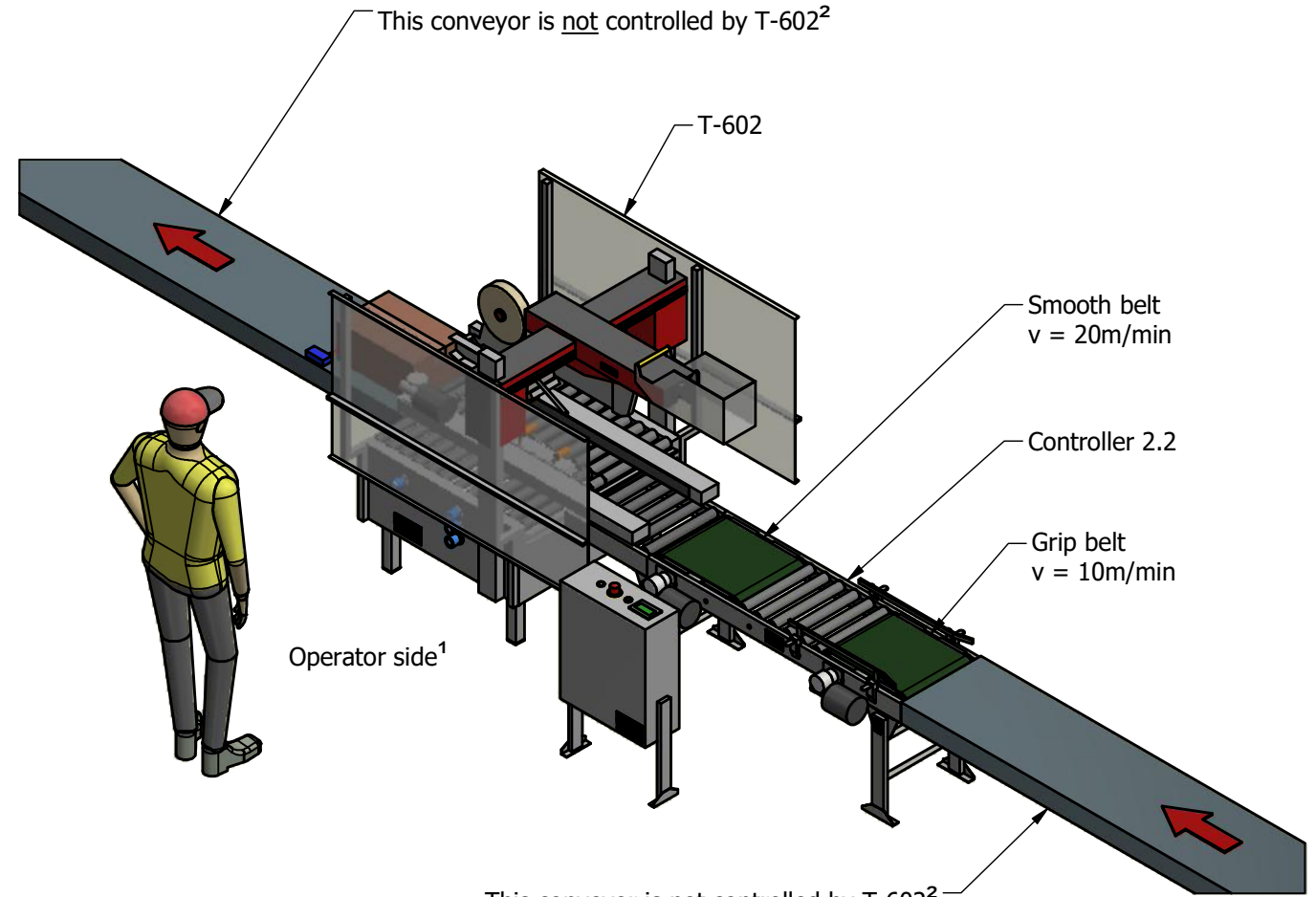
### VIEW5 ( 1 : 20 )



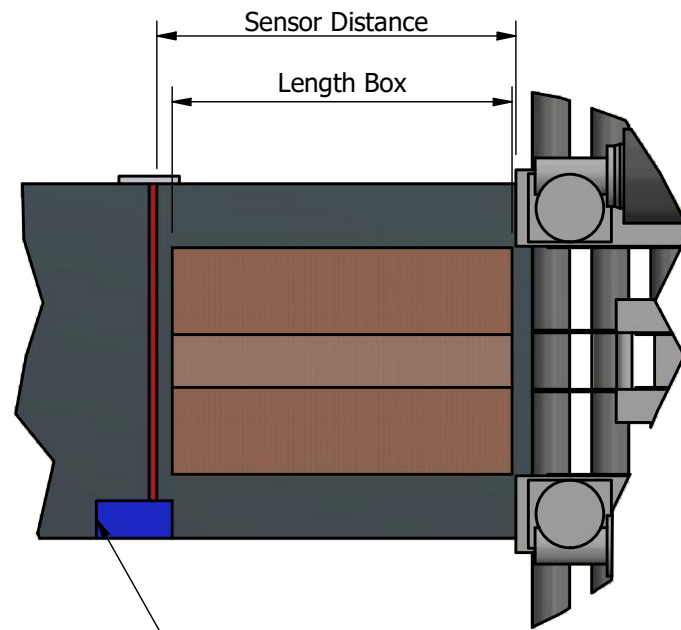
Pillar Height	R	Min Working Height	Note on min height
-5-	580mm	420mm	Due to machine body*
-8-	880mm	570mm	Due to safety gate

\*If the bottom tape diameter(D) is more than 180mm then the minimum working height(H) will increase:  
 $H = \frac{D}{2} + 330$  [mm]

Example:  
 Bottom tape diameter[D] = 380  
 $H = \frac{380}{2} + 330 \Rightarrow H = 520$   
 The minimum working height is 520mm

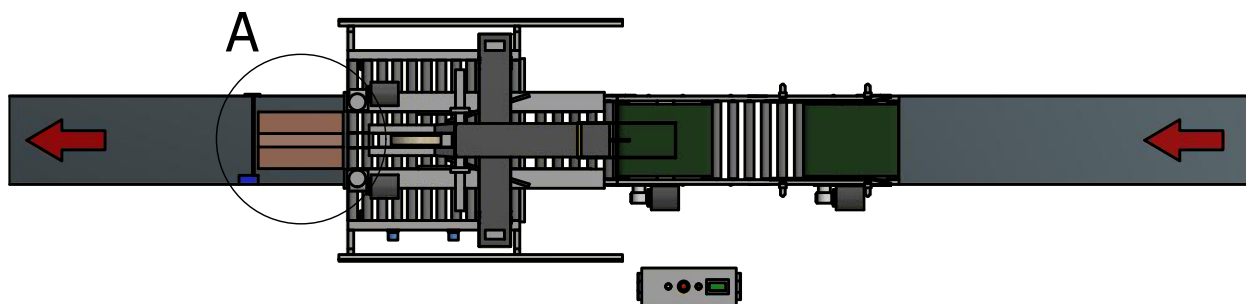


### A ( 1 : 10 )



Sensor part is of T-602.  
 Detects box when it is out of the T-602.  
 Adjusted so: Sensor Distance > Box Length

### VIEW2 ( 1 : 40 )



**Notes:**

- 1: From this side the operator can adjust the pneumatic system (blue knobs), open the safety gate and start/stop the machine with the different buttons and HMI
- 2: The T-602 can only control the "Controller 2.2" at the inlet shown on the drawing. Other conveyors cannot be controlled by T-602



This drawing is a simplification to show additional info about the machine.

Description:  
 T-602 Master Layout

Creation Date:	08-12-2020
Initials:	AMO
Scale:	1 : 30
Valid date:	19-01-2021
Initials:	AMO
Drawing No.:	49550XXXX

49550XXXX  
 Rev.nr.: 1